



// **As convoluted the healthcare system** can be in America, people and platforms like yours can really make it easy for us providers to do our job.

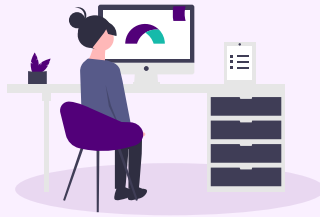
— **Khyati Patel, PharmD, BCACP**

Associate Professor, Rosalind Franklin University of Medicine and Science, College of Pharmacy
Aurora Medical Center, Kenosha, WI



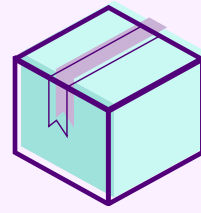
PROVIDER PLACES ORDER

Coordination of Health Plan,
Supplier, and Clinical info
prevents future order re-work



SUPPLIER ACCEPTS OFTEN SAME DAY

Digital chat and status updates
enable fast communication and
order transparency



ORDER DELIVERED IN DAYS, NOT WEEKS

Patients begin therapy on
time, eliminating patient
phone follow-ups

Parachute Health digital ordering provides faster, efficient ordering and status visibility

- 1 Select products digitally from a large network of suppliers on the Parachute Network
- 2 Create clean orders with no future revisions needed
- 3 Receive order updates with transparency into status — save time on phone calls!

GET STARTED TODAY!

parachutehealth.com/ascensia

Digital Ordering,
Delightfully Simple

Up to 85% Faster Time from Order to Delivery by Ordering on the Parachute Platform

1

Select Your Product

After entering the patient's name, date of birth, gender, and insurance info - you can start shopping!

Either search for "Continuous Glucose Monitor Package" or select the **Diabetes** category.

2

Review Product Summary

Review the order, make any edits, if required, and press **Continue**.

Product Summary

Eversense Continuous Glucose Monitoring Package

Configuration

- Provided by Ascensia Diabetes Care
- Eversense Transmitter - CGMT
 - Eversense Sensor - CGMS
 - Eversense Insertion Tool Kit
 - Eversense Adhesive Patches
 - Eversense Procedure Kit - DIABETES

Edit

Prescription Details

- Insulin treatment: Continuously via insulin pump
- Directions: Use per manufacturer directions

Edit

Details

Length of need: 99 mo
Quantity: 1
Payment Method: Bill Insurance

Edit

Remove

Add Items

Continue

Diagnoses

Add any relevant diagnosis codes for the products you ordered

- Eversense Transmitter
- Eversense Sensor

Diagnosis Codes

Search and select by ICD-10 or description

E11.65 Type 2 diabetes mellitus with hyperglycemia

3

Enter Diagnosis Code(s)

After entering the patient's addresses and contacts, go to the Clinical Info Page to select the patient's diagnosis and we will tell you if it qualifies.

**Digital Ordering,
Delightfully Simple**

Documentation Requirements

The following documents are required for this order:

	WOPD Parachute creates the script for you	✔ Complete
	Face-to-Face (Diabetes)	⚠ Not Started Edit

Still need to satisfy requirements for this order?

[Build Documents With Parachute](#)

4

Review Document Requirements

From the Clinical Info page, you can also check which documents are required to fulfill the order, if they can be generated in Parachute or if they'll need to be attached.

5

Complete Documentation

Answer each question and add any notes at the end, if desired, then press **Continue**.

Insulin treatment prior to this order

- a continuous subcutaneous insulin infusion (CSII) pump
- at least 3 daily administrations
- at least 1 daily administration
- none of the above

Signing Clinician

6

Select the Signature Method

- **Sign On-Screen** - if the clinician is there to press the 'Sign' button
- **Sent a Request via SMS** - Allows clinician to sign on their phone (most effective)

You can add a Clinician's cell phone number or email if it is not already entered.

Who will be signing the order?

Radhika Test Narayanan - 1216032109

Signature Method

- Sign On-Screen
- Send a Request
- Print and Attach

Send a Request

This method sends a request for signature to any of the following addresses. The request(s) will be sent on submission.

+ Add Clinician Email

SMS: ***-***-8984

127 orders signed

+ Add Clinician Fax Number

The clinician will be asked to sign these documents:

- WOPD Ready for Signature
- Face-to-Face (Diabetes) Ready for Signature

[Continue](#)

7

Send Order

Review the Order, then press **Send Order** and you're done!

Order Details

✔ Ready to Send

[Send Order](#)